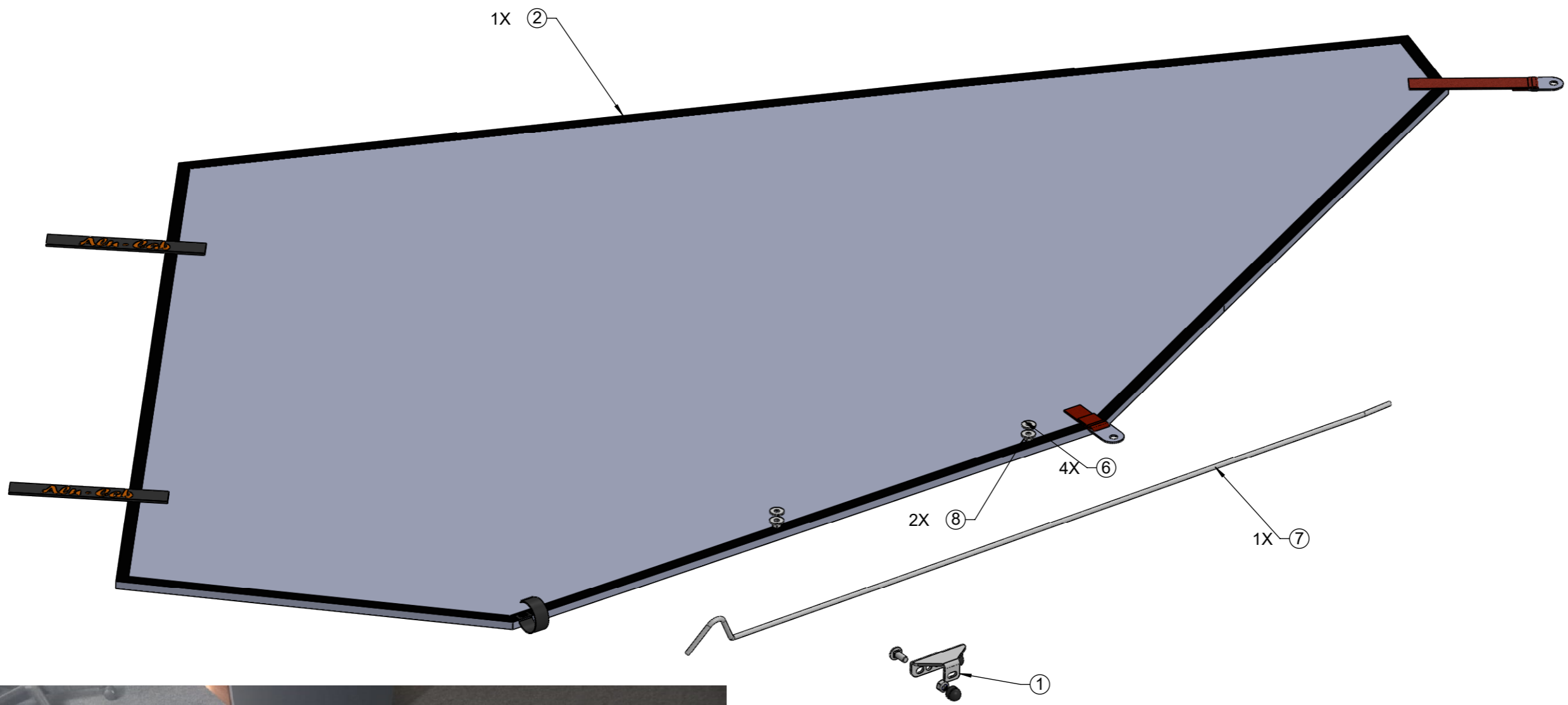


ASSY INFO	MASS (kg):	
	BONDED:	
FINISH	FASTENED:	Y
	WELDED:	
	TUMBLED:	
	BRUSHED:	
	POWDER:	
	SPRAY:	
	COLOUR:	N/A



ITEM NO.	PART NUMBER	DESCRIPTION	QTY
1	413-SPRG-POL-BRKT-01	GEN 3.1 FLYSHEET SPRING POLE BRACKET	1
2	AFT3.R-FLY	GEN3.1 FLYSHEET	1
3	SQN-M8x20	M8x20 CUP SQ BOLT S/S	2
4	NY-M8	M8 NYLOC NUT S/S	2
5	NCAP-M8	NUT CAP-08mm	2
6	FFW-M6	M6x18mm OVERSIZED WASHER S/S - DIN 9021	4
7	SPRNG1100	SPRING POLE - (1100mm LONG)	1
8	NY-M6	M6 NYLOC NUT S/S	2

TOLERANCES TO ASSUME UNLESS INDICATED OTHERWISE

NOM DIMENSION RANGE (mm)	TOLERANCE
0.50 - 3.00	± 0.10
3.00 - 6.00	± 0.15
6.00 - 30	± 0.20
30 - 120	± 0.30
120 - 400	± 0.50
400 - 1000	± 1.00
1000 - 1000<	± 2.00

DESCRIPTION:
FLY SHEET ASSEMBLY

PROJECT:
RT-R - RT-R

DRAWN BY:
System Administrator

DATE:
2022-11-23

THE INFORMATION CONTAINED WITHIN THIS DOCUMENT IS THE INTELLECTUAL PROPERTY OF ALU-CAB (PTY) LTD

SHEET:
A3

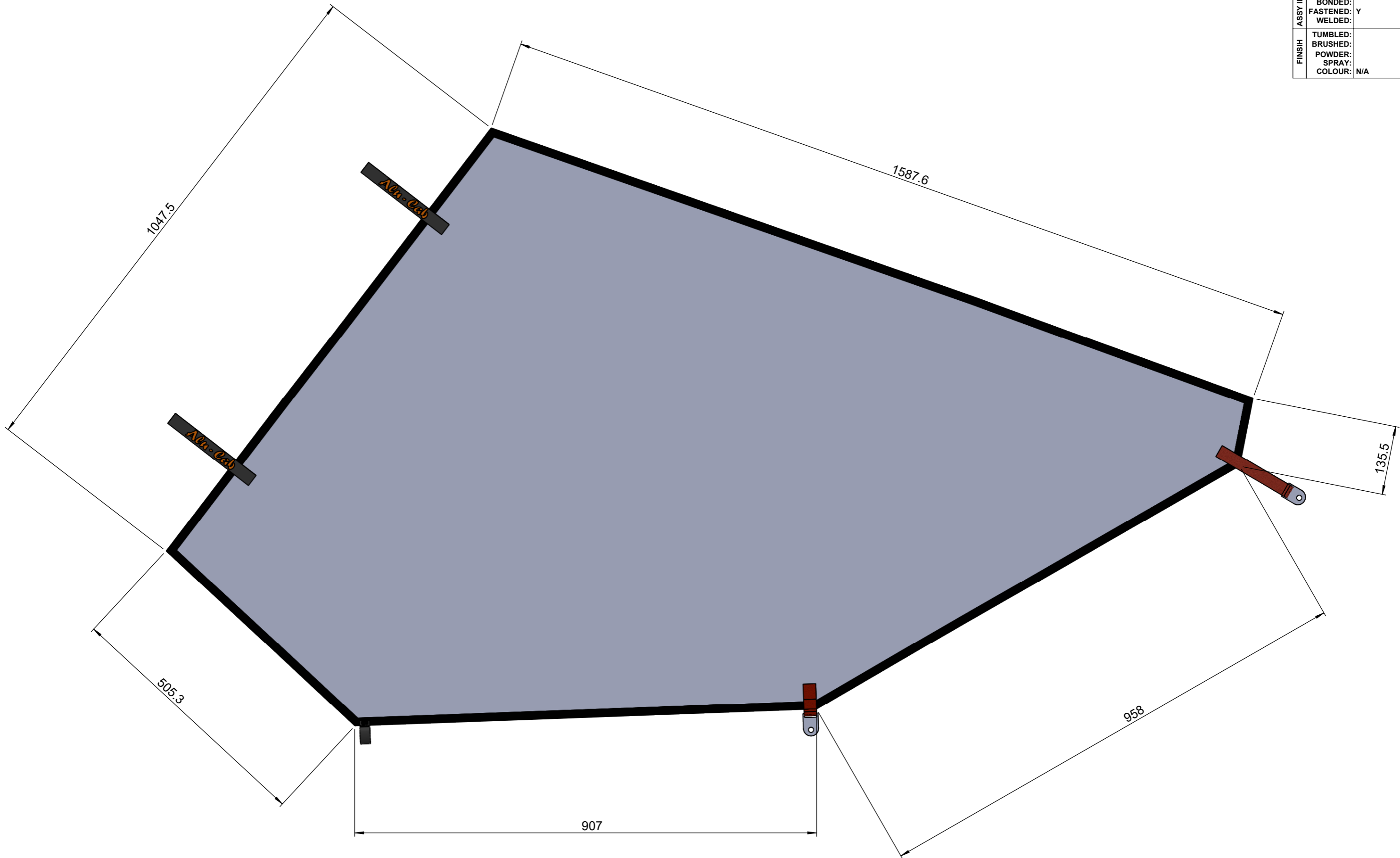
SCALE:
1:6

SHEET
1 of 2

DRAWING NO.
430-FLY-SHT-ASSY-01-PL

REV
01

ASSY INFO	MASS (kg):	
	BONDED:	Y
	WELDED:	
FINISH	TUMBLED:	
	BRUSHED:	
	POWDER:	
	SPRAY:	
	COLOUR:	N/A



**TOLERANCES TO ASSUME
UNLESS INDICATED OTHERWISE**

NOM	DIMENSION	RANGE (mm)	TOLERANCE
0.50	-	3.00	± 0.10
3.00	-	6.00	± 0.15
6.00	-	30	± 0.20
30	-	120	± 0.30
120	-	400	± 0.50
400	-	1000	± 1.00
1000	-	1000<	± 2.00

DESCRIPTION:
FLY SHEET ASSEMBLY

PROJECT:
RT-R

DRAWN BY:
System Administrator

DATE:
2022-11-23

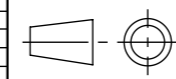
THE INFORMATION CONTAINED WITHIN THIS DOCUMENT
IS THE INTELLECTUAL PROPERTY OF ALU-CAB (PTY) LTD

SHEET:
A3

SCALE:
1:7

SHEET
2 of 2

REV
01



DRAWING NO.
430-FLY-SHT-ASSY-01-PL